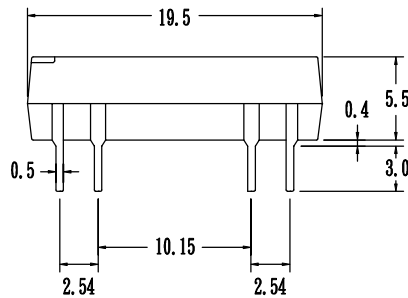
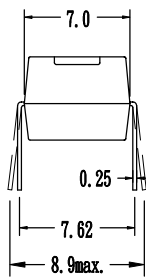
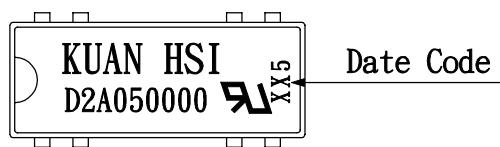


PRODUCT SPECIFICATION

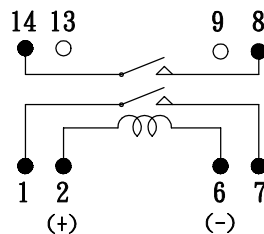
COSMO ELECTRONICS CORPORATION	REED RELAY: D2A050000	SHEET 1 OF 2
---	---------------------------------	--------------

1. OUTSIDE DIMENSION : UNIT (mm)



TOLERANCE : $\pm 0.1\text{mm}$

2. SCHEMATIC : TOP VIEW



PRODUCT SPECIFICATION

COSMO ELECTRONICS CORPORATION	REED RELAY: D2A050000	SHEET 2 OF 2
---	---------------------------------	--------------

3.0 COIL RATINGS: (AT 20°C)

3.1	Coil resistance	140	Ω	($\pm 10\%$)
3.2	Nominal coil current	5	VDC	
3.3	Maximum Continuous voltage	10	VDC	
3.4	Must operate	3.75	VDC	
3.5	Must release	1.0	VDC	
3.6	Rated current	35.7	mA	

4.0 ELECTRONICAL CHARACTERISTICS:

4.1	Contact resistance	100	m Ω	(max)
4.2	Operate time	0.5	ms	(max)
4.3	Bounce time	0.5	ms	(max)
4.4	Release time	0.2	ms	(max)
4.5	Insulation resistance (100 VDC open contact)	10^{11}	Ω	(min)
4.6	Power	10	VA	(max)
4.7	Switching voltage	200	VDC	(max)
4.8	Switching current	0.5	A	(max)
4.9	Carry current	1.0	A	(max)
4.10	Breakdown voltage (across open contact)	250	VDC	(min)
	(between coil & contact)	500	VDC	(min)
4.11	Life expectancy (signal level)	10^8		
4.12	Operating temp	-40 to 85°C		
4.13	Storage temp	-50 to 125°C		
4.14	Resonant frequency	3.5	KHZ	
4.15	Vibration (10-2000HZ)	20	g	(max)
4.16	Minimum permissible load	100	mVDC	10uA